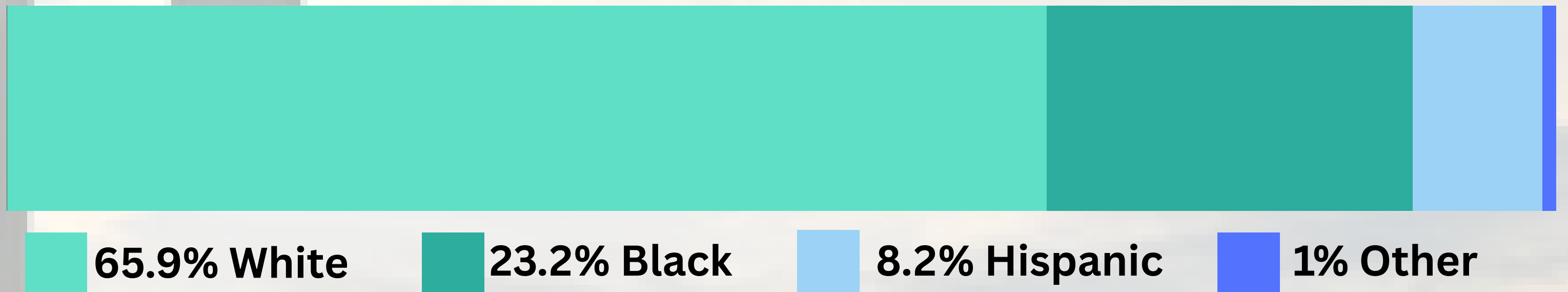


2024 BEAUFORT COUNTY COMMUNITY HEALTH NEEDS ASSESSMENT

POPULATION: 43,912



LEADING CAUSES OF DEATH (2019-2023)

Cause	Rate**
Heart Disease	305.5
Cancer	275.1
COVID-19	84.9
Cerebrovascular Disease	82.2
Alzheimer's Disease	73.3
Chronic Lower Respiratory Disease	72.0
Unintentional Injuries	70.7
Diabetes Mellitus	44.4
Nephritis, Nephrotic Syndrome, & Nephrosis	36.4
Chronic Liver Disease & Cirrhosis	24.4

**MEDIAN
HOUSEHOLD
INCOME**
Beaufort County
\$53,044
North Carolina
\$64,316

** Rate of deaths in Beaufort County per 100,000 people

POVERTY

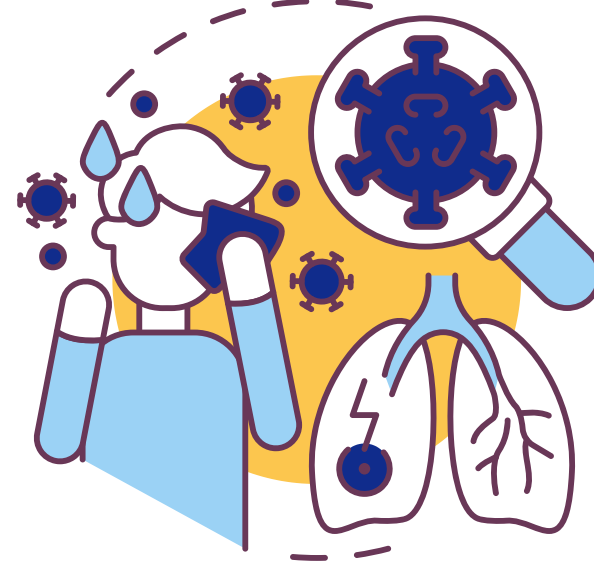
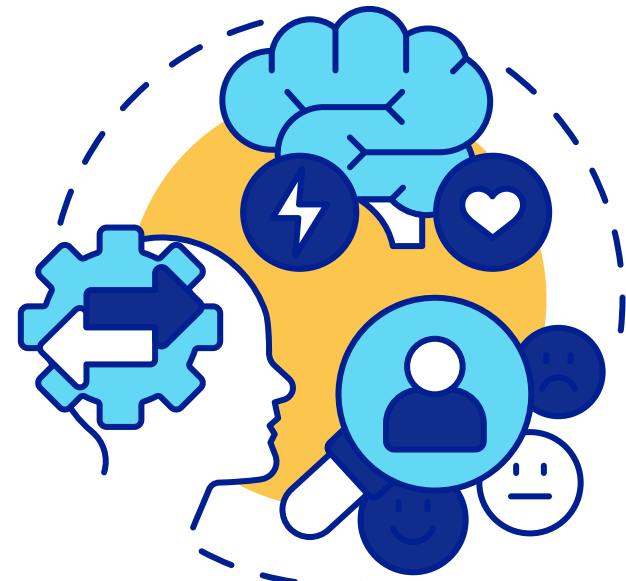
16.4% of Beaufort County households live below the poverty level, compared to 10.1% for North Carolina and 9.5% for the United States.

ALICE

Assess Limited, Income Constrained, Employed

28% of Beaufort County households cannot afford basic essentials, compared to 29% for North Carolina.

TOP 4 FOCUS AREAS



**ACCESS TO
HEALTHCARE**

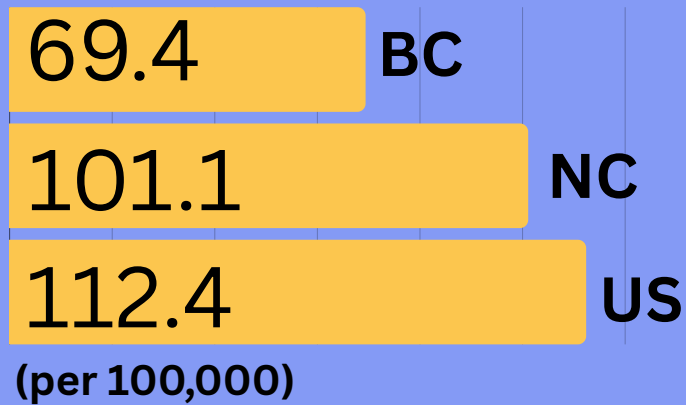
**BEHAVIORAL HEALTH:
MENTAL HEALTH &
SUBSTANCE USE**

**CHRONIC
HEALTH
CONDITIONS**

**FAMILY,
COMMUNITY
& SOCIAL SUPPORT**

PRIMARY CARE PROVIDERS RATE

**ACCESS TO
HEALTHCARE**



5.8%

Households
have no
motor vehicle

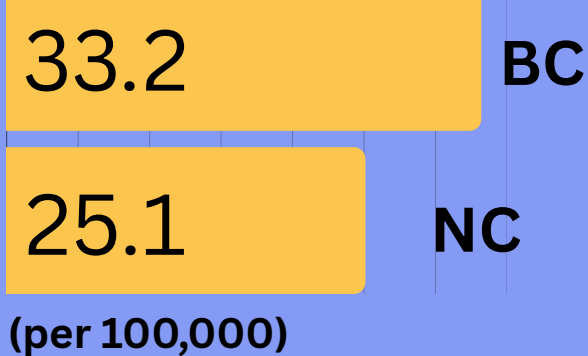
TOP 3 BARRIERS TO RECEIVING HEALTHCARE

- 1 Cost (78%)
- 2 No insurance (55%)
- 3 Lack of transportation (41%)

OPIOID OVERDOSE DEATH RATE

**BEHAVIORAL
HEALTH**

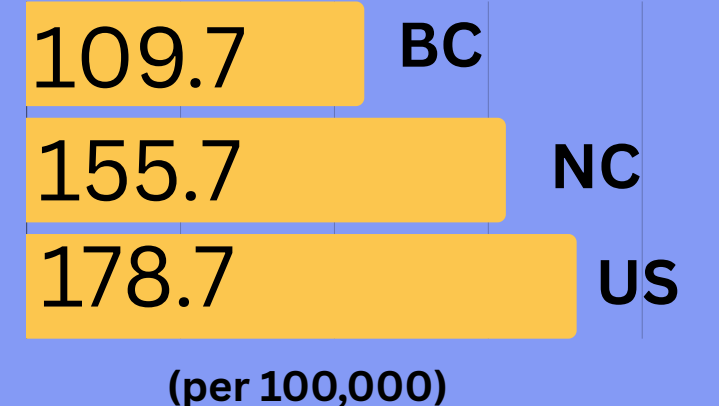
(Including Mental Health & Substance Use)



MOST IMPORTANT HEALTH PROBLEMS

- 1 Alcohol/Drug Addiction
- 2 Diabetes
- 3 Mental Health (Depression/Anxiety)

MENTAL HEALTH PROVIDERS RATE



**CHRONIC
HEALTH
CONDITIONS**

6 out of 10 are living with at least one chronic disease

Focus group participants identified diabetes, cancer, heart disease, & high blood pressures as among the most serious health problems in the community.

8 out of 10 deaths in North Carolina are related to a chronic health condition

**FAMILY,
COMMUNITY
& SOCIAL
SUPPORT**

Focus group participants discussed the cost of living and the lack of well-paying jobs as an issue.

MOST IMPORTANT SOCIAL & ENVIRONMENTAL PROBLEM THAT AFFECT YOUR COMMUNITY

- 1 Availability / Access to doctors office
- 2 Housing / Homelessness
- 3 Lack of job opportunities

Focus group participants discussed the existing community partnerships as being a strength in Beaufort County.

Sources: 2024 Community Health Needs Assessment & ALICE County Reports with ZIP and Place Data

For the full report <https://bchd.net/255/Reports-Resources> or by emailing Brittany.Joseph@bchd.net